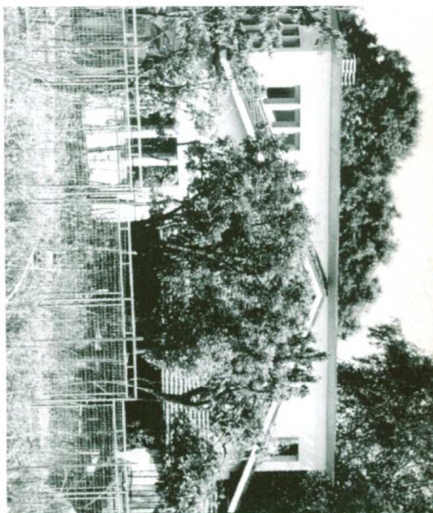


Complesso industriale GERRAG

Bari, Italia
1996-1998

Giampiero Peia,
Studio Peia Associati,
Milano

collaboratori/collaborators: Giano Donati, Laura Eynard, Angelo Fiore, Andrea Piazzalunga, Mary Pievatoli, Emanuela Spina; Tei Engineering Milano (structure/structural engineering) con/with Fichner-Stoccarda e/and (direzione lavori con/supervision of works with) Pier Rinaldo Morfini; Piemme-Milano (impianti/engineering)

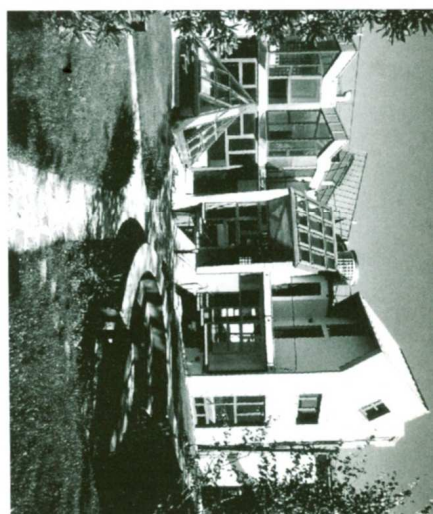
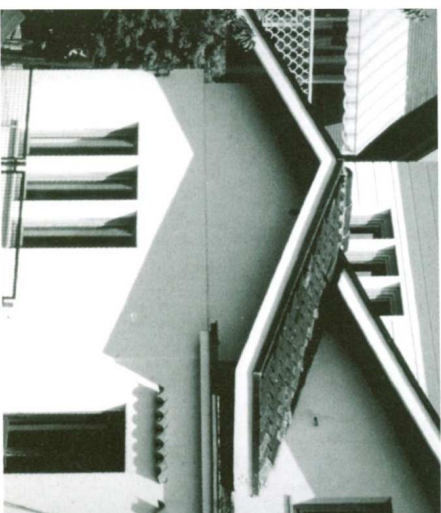


Ampliamento e ristrutturazione di una Casa unifamiliare

Pavignano (Biella), Italia
1996-1998

Cesare Piva, Vigliano (BI)

direzione lavori/supervision of works: Paolo Piva
collaboratori/collaborators: Silvia Briccarello, Paolo Bistolfi;
structure/structural engineering: Francesco Scoleri



Villette a schiera

Monza, Italia
1995-1998

Laura Rocca, Monza

strutture/structural engineering:
Silverio Tettamanti

